

“Do your best, not to be better than anyone but to be the best version of yourself”



REPUBLIC OF RWANDA
MINEDUC
WESTERN PROVINCE
RUSIZI DISTRICT
NKOMBO SECTOR
G.S. SAINT PIERRE NKOMBO

Tel: 0788664906/0722664906 (Father Nlas)

E-mail: gsnkombo@gmail.com

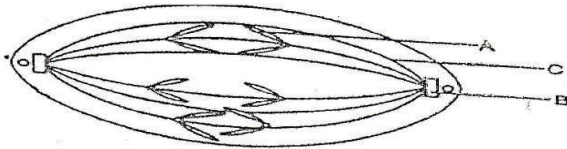


BIOLOGY 1st TERM (2023-2024) HOLIDAY PACKAGE FOR S3

Q1.(a)What is pollution?

(b)List the main causes of water pollution.

Q2.The figure below shows an animal cell during a mitotic division.



(i)Name the structures A,B and C.

(ii)What stage of mitotic division shows in the figure.

(iii)State two roles of mitosis.

Q3. (a)The following are parts of an organism.

Cell, organ, chromosome, system, gene, tissue.

Arrange them in decreasing order of their size (from largest to the smallest).

(b)Differentiate egestion from excretion.

Q4. What kind of relationship is represented in the following relationship.

(a)Worms in the human intestines.

(b)A cat catching a mouse.

(c) Insects in a flower.

(d) A cow grazing in field.

Q5. (a)State the features of good gaseous exchange surfaces.

(b)Describe the road taken by air as it is inhaled.

Q6. (a) What substances must be produced at the end of the chemical digestion in the Ileum.

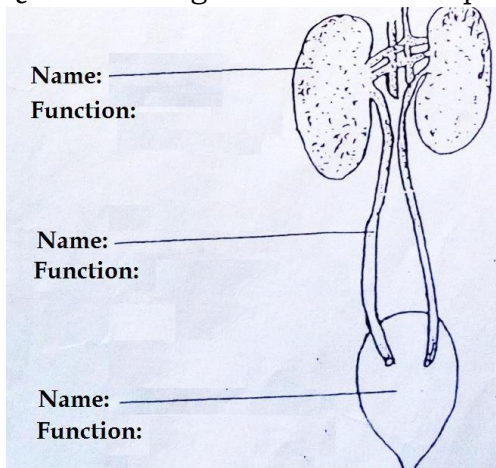
(b) Identify the practices that can maintain your digestive system in good health.

Q7. Explain why elimination of water by the kidneys may be considered to be both excretion and osmoregulation.

Q8. Describe the predator-prey relationships using a graph.

Q9. Discuss deeply the causes and consequences of Rapid population growth

Q10. The diagram below shows part of the system that controls the amount of water in the body.



Examiner: Teacher M. Gentil Theophile

“Don’t wish it was easy, wish you were better”